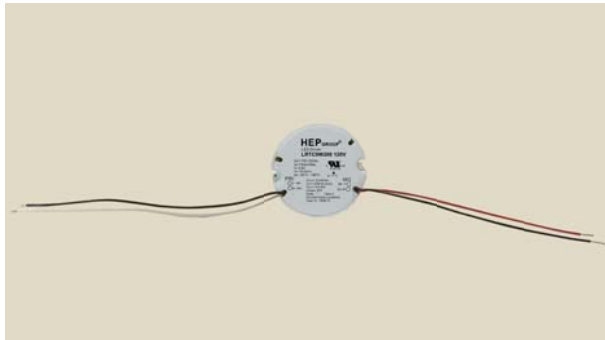




Triac Dimming LED Driver



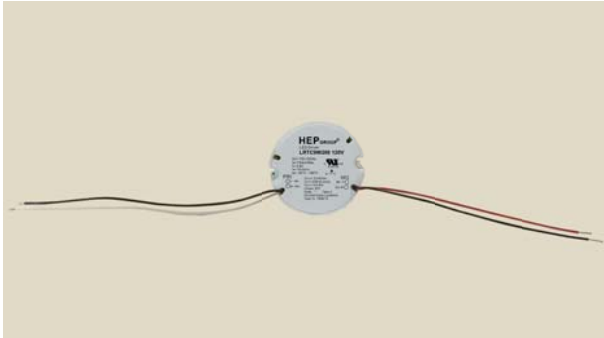
Approval Marks



Electronic

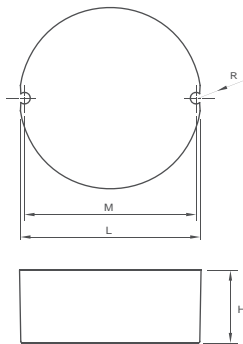
| Parameter | Conditions | Min | Nom | Max | Unit |
|--------------------------------|---|------|-------------------------------|------|------|
| I/P Voltage Range | | 90 | 100-120 | 120 | Vac |
| Input Frequency | | 47 | 50-60 | 63 | Hz |
| Input Power | 25°C, Nominal Input@110VAC | - | - | 11.5 | W |
| Input Current | 25°C, Nominal Input@110VAC | - | - | 130 | mA |
| Output Voltage Range | LRTC9W200 120V | - | 33-40 | - | Vdc |
| | LRTC9W350 120V | - | 18-26 | - | Vdc |
| | LRTC9W500 120V | - | 13-18.5 | - | Vdc |
| | LRTC9W700 120V | - | 10-13 | - | Vdc |
| Output Current Range | LRTC9W200 120V | 190 | 200 | 210 | mA |
| | LRTC9W350 120V | 333 | 350 | 368 | mA |
| | LRTC9W500 120V | 475 | 500 | 525 | mA |
| | LRTC9W700 120V | 665 | 700 | 735 | mA |
| Rated Output Power | LRTC9W200 120V | - | 6.6-8 | - | W |
| | LRTC9W350 120V | - | 6.5-9 | - | W |
| | LRTC9W500 120V | - | 6.5-9.25 | - | W |
| | LRTC9W700 120V | - | 7-9 | - | W |
| THD | @ 110V, max load | - | - | 20 | % |
| Efficiency | Full Load@110VAC | 78 | - | - | % |
| Standby Power | No load @110Vac | - | - | 0.5 | W |
| Rise Time | | - | - | 500 | ms |
| Start-up Delay | @110Vac | - | - | 500 | ms |
| Output Current Overshoot | | - | - | 20 | % |
| Ripple Current | peak to peak @ Full Load at 20MHz Bandwidth | - | 40 | - | % |
| Power Factor | Full Load@110Vac | 0.90 | - | - | - |
| Protection | Over-voltage Protection | | Auto recovery | | |
| | Open-circuit Protection | | Max output voltage at no load | | |
| | Short-circuit Protection | | Auto recovery | | |
| Open Circuit Voltage | LRTC9W200 120V | - | 50 | - | Vdc |
| | LRTC9W350 120V | - | 36 | - | Vdc |
| | LRTC9W500 120V | - | 26 | - | Vdc |
| | LRTC9W700 120V | - | 20 | - | Vdc |
| Surge | L,N | - | 1 | - | KV |
| Case Temperature(Tc) | | - | - | +77 | °C |
| External Operating Temperature | | -20 | - | +60 | °C |
| Operating Humidity Range | | 10 | - | 90 | % |
| Storage Temp. Range | | -40 | - | +85 | °C |
| Dimming Type | | | Triac dimming | | |
| Dimming Range | | 10 | - | 100 | % |
| Lifetime | @110V, Tc=90°C | - | 50,000 | - | hrs |
| Case Dimensions | ∅xH | | ∅55x22 | | mm |

Triac Dimming LED Driver



Physical

Parameter



L : 55 mm H : 22 mm
 M : 52 mm K : mm
 N : mm R : 1.7 mm
 W : mm

Tolerance : $\geq 0 \sim 100 \geq \pm 0.5\text{mm}$
 $100 \geq \pm 1 \text{ mm}$

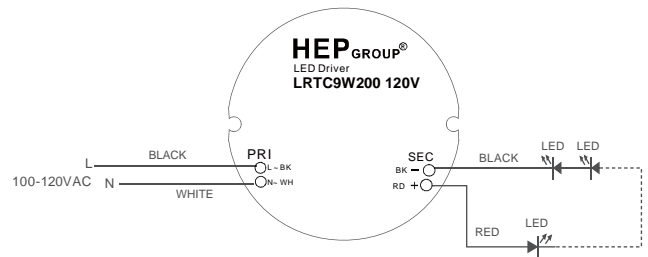
Terminal Block : Hard Wires : PRI : White / Black 140mm AWG#18
 SEC : Red / Black 140mm AWG#22

Housing Material : Polycarbonate

Soldering : Lead-Free, Comply With RoHS

Label : Surface Print

Wiring Diagram



Leading Edge Dimmer list approved by HEP

| Manufacturer | Model | Q'ty of parallel connection |
|--------------|-----------------|-----------------------------|
| LUTRON | MACL-153M(600W) | 15 |
| LUTRON | DV-603P(600W) | 15 |
| LUTRON | AYLV600P(600W) | 15 |

Trailing Edge Dimmer list approved by HEP

| Manufacturer | Model | Q'ty of parallel connection |
|--------------|------------------|-----------------------------|
| LUTRON | SELV-300P(300W) | 15 |
| LUTRON | DVELV-303P(300W) | 15 |
| LEVITON | VPE06(600W) | 15 |
| LEVITON | VPE04(400W) | 15 |
| LIGHTOLIER | ZP260QE(260W) | 10 |