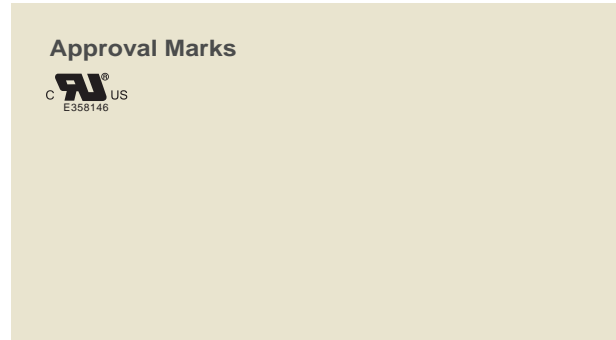
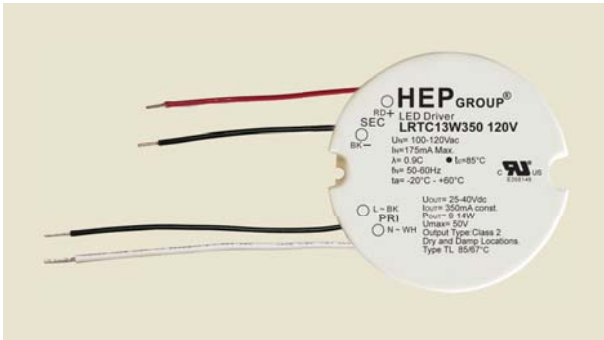


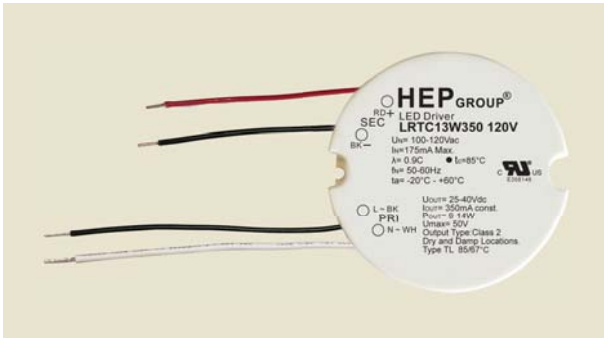
**Triac Dimming LED Driver**



**Electronic**

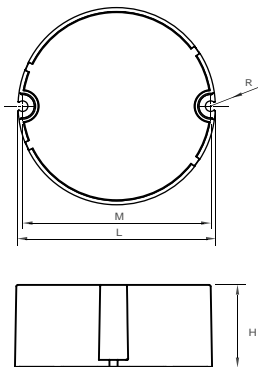
Parameter	Conditions	Min	Nom	Max	Unit
I/P Voltage Range		90	100-120	132	Vac
Input Frequency		47	50-60	63	Hz
Input Current	25°C, Nominal Input@110VAC	-	-	175	mA
Input Power	LRTC13W350 120V	-	-	17.5	W
	LRTC13W500/700 120V	-	-	16.5	W
Output Voltage Range	LRTC13W350 120V	25	-	40	Vdc
	LRTC13W500 120V	18	-	26	Vdc
	LRTC13W700 120V	13	-	18.5	Vdc
Output Currntn Range	LRTC13W350 120V	332	350	368	mA
	LRTC13W500 120V	475	500	525	mA
	LRTC13W700 120V	665	700	735	mA
Rated Output Power	LRTC13W350 120V	9	-	14	W
	LRTC13W500 120V	9	-	13	W
	LRTC13W700 120V	9	-	13	W
THD	@ 110V, max load, %	-	-	20	%
Efficiency	Full Load @ 110Vac	80	-	-	%
Standby Power	No load @ 110Vac	-	-	0.5	W
Rise Time		-	-	500	ms
Start-up Delay	@110Vac	-	-	500	ms
Surge	IEC6100-4-5, Full Load@230V	L/N, 1KV ; L/N-PE, 1KV			
Output Current Overshoot		-	-	5	%
Ripple Current	@110V, max load, ±%	-	-	40	%
Power Factor	Full Load@110Vac	0.90	-	-	-
Protection	Over-voltage Protection	Auto recovery			
	Open-circuit Protection	Max output voltage at no load			
	Short-circuit Protection	Auto recovery			
Case Temperature(Tc)		-	-	+85	°C
External Operating Temperature		-20	-	+60	°C
Operating Humidity Range		10	-	90	%
Storage Temp. Range		-40	-	+85	°C
Dimming Type	Leading & Trailing Edge	Triac dimming			
Dimming Range		10	-	100	%
Lifetime	@ 110V, Tc=85°C	-	50,000	-	hrs
Case Dimensions	φxH	φ65x27			mm

**Triac Dimming LED Driver**



**Physical**

**Parameter**

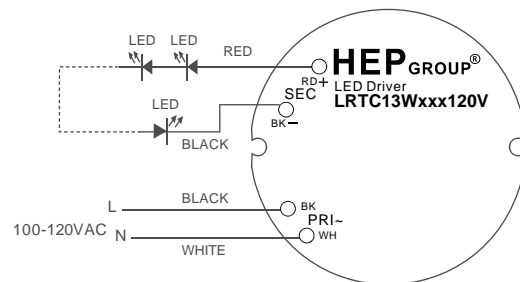


L : 65 mm    H : 27 mm  
 M : 62 mm    K : mm  
 N : mm    R : 3.5 mm  
 W : mm  
 Tolerance :  $\geq 0 \sim 100 \geq \pm 0.5$  mm  
 $100 \geq \pm 1$  mm

Terminal Block : Hard Wires : PRI : White / Black 180mm UL1015#18  
 SEC: Red / Black 100mm UL1332#20

Housing Material : Polycarbonate / Potting  
 Soldering : Lead-Free, Comply With RoHS  
 Label : Surface Print

**Wiring Diagram**



**Leading Edge Dimmer list approved by HEP**

Manufacturer	Model	Q'ty of parallel connection
COOPER	SLC03P	10
COOPER	DAL06P	10
LUTRON	S-603P	10

**Trailing Edge Dimmer list approved by HEP**

Manufacturer	Model	Q'ty of parallel connection
LUTRON	DVELV-303P	10
LUTRON	SELV-300P	10
LEVITON	VPE04	10
LEVITON	VPE06	10