

Approval Marks



	Item	Value	Remark
Input	Nominal voltage	220-240V	
	Nominal frequency	50–60Hz	
	AC voltage range	198-264V	
	DC voltage range (start)	N/A	
	DC voltage range (operation)	N/A	
	Nominal current	50mA	
	Total Harmonic Distortion (THD)	< 20%	Full load @230VAC
	Power factor	0.9C	Full load @230VAC
	Displacement factor	0.9C	Full load @230VAC
	Efficiency		
	G5RT7W150/350LRP	75%(Typ.)	Full load @230VAC
	G5RT7W500/700LRP	72%(Typ.)	Full load @230VAC
	No-load power	NA	
	Stand-by power	NA	
Protection class	NA		
Inrush current	9A/23us		
Earth leakage current	NA		
Output	Nominal voltage range		
	G5RT7W150LRP	30-42Vdc	
	G5RT7W350LRP	12-22Vdc	
	G5RT7W500LRP	9-13Vdc	
	G5RT7W700LRP	6-9Vdc	
	Maximum voltage		
	G5RT7W150LRP	55V	
	G5RT7W350LRP	28V	
	G5RT7W500LRP	21V	
	G5RT7W700LRP	18V	
	Nominal current range		
	G5RT7W150LRP	150mA	Full load @220~240VAC
G5RT7W350LRP	350mA	Full load @220~240VAC	
G5RT7W500LRP	500mA	Full load @220~240VAC	
G5RT7W700LRP	700mA	Full load @220~240VAC	

	Item	Value	Remark	
	Current accuracy			
	G5RT7W350/500/700LPR	± 5%		
	G5RT7W150LPR	±7%		
Output	Typical output LF current ripple	± 5%	Low Frequency<120Hz	
	Nominal power range			
	G5RT7W150LRP	4.5-6.3W		
	G5RT7W350LRP	4.2-7.7W		
	G5RT7W500LRP	4.5-6.5W		
	G5RT7W700LRP	4.2-6.3W		
	Maximum power	7W		
Dimming	Dimming control	Trailing Edge		
	Dimming technique	Amplitude		
	PWM frequency	NA		
	Dimming range	10-100%		
	Lowest dimming current	2-6%		
	Galvanic isolation	NA		
		Ambient temperature range t_a	-20°C...+50°C	
	Maximum case temperature t_c	80°C		
Environment	Max. case temp. in fault condition	110°C	When operating under fault conditions, the temperature of the enclosure at any location should not exceed 110 °C	
	Storage temperature range	-40°C...+85°C		
	Relative humidity	10%...95%		
	Surge transient protection	1 kV	L/N	
	Environmental rating	Indoor		
	IP rating	IP20		
	Mains switching cycles	> 100,000		
	Expected lifetime	> 50,000 h, t_c 80 °C @ t_a 50 °C > 100000 h, t_c 70 °C @ t_a 40 °C	0.2 % / 1,000 h failure rate 0.1 % / 1,000 h failure rate	
	Packing	Gross weight/box	4.1 kg	
		Net weight/box	3.7 kg	
Pcs/box		60 PCS		
Dimension/box		240(L)*190(W)*185(H)mm		
Protections				
Short- & open circuit proof, Overload protection				
Conformity & Standards				
Safety standard:	EN 61347-1, EN 61347-2-13, EN 62493			
Performance:	EN 62384			
EMC standard:	EN 55015, EN 61000-3-2, EN 61000-3-3, EN 61547			

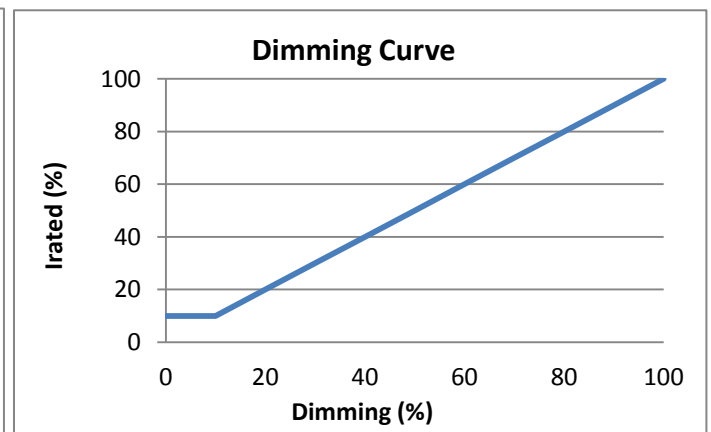
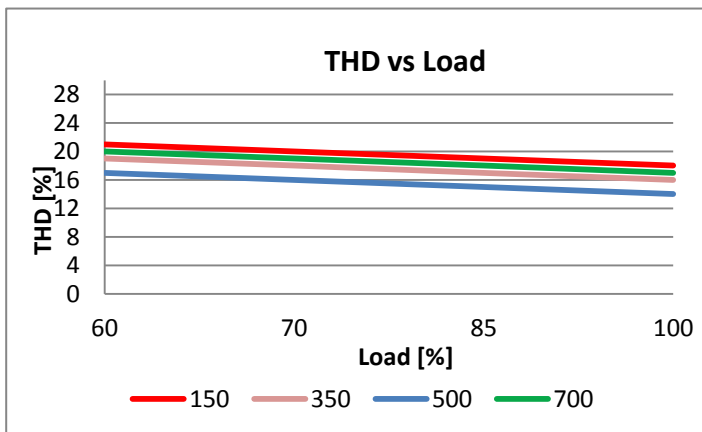
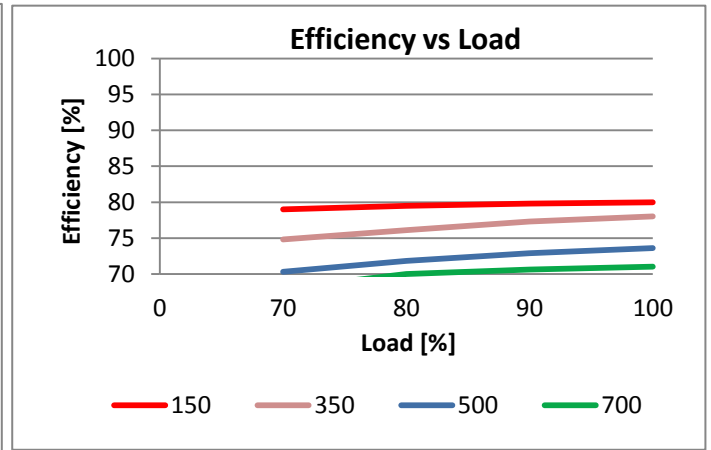
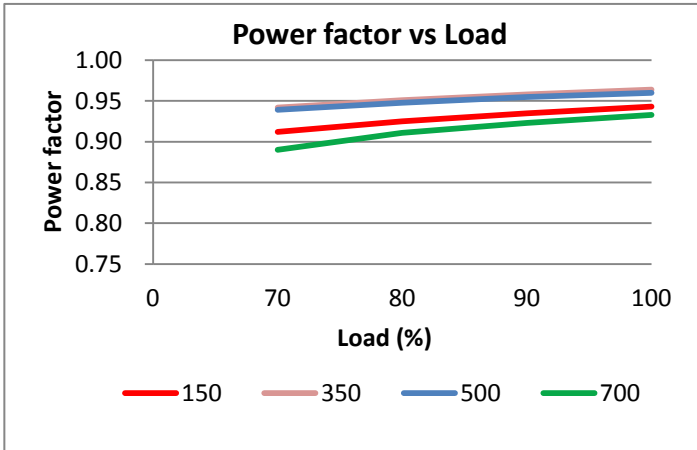
Cable information

PRI Connection	L	N
Color	Brown	Blue
Wire type	7022	7022
Wire diameter	AWG20	AWG20
Wire length	138mm	138mm
Stripping	6mm	6mm
Sec Connection	+	-
Color	Red	Black
Wire type	1332	1332
Wire diameter	AWG22	AWG22
Wire length	138mm	138mm
Stripping	6mm	6mm

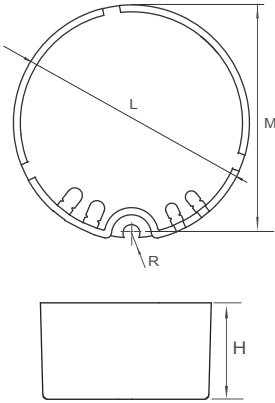
Subject to change without notice, HEP guarantees all products perform functionally well

Trailing Edge Dimmer list approved by HEP

Manufacturer	Model	Qty of parallelconnection
HEP	DCT101	22
HEP	DCT202	10
Philips	SED-200A	14
Merten/Schneider	SBD315RC	23
Etman	ETM327	23
Etman	ETM329	23

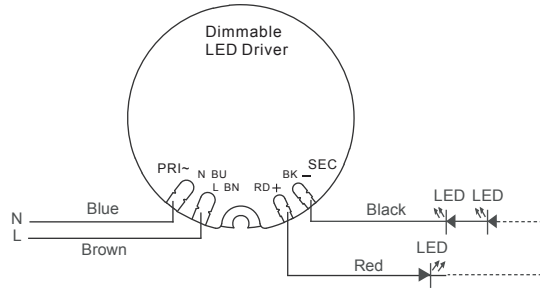


**Physical
Parameter**



L : 44.3 mm M : 42.8 mm
 H : 25 mm R : 1.6 mm
 Tolerance : +/-1 mm , R : +/-0.5 mm
 Housing Material : Polycarbonate / Potting
 Soldering : Lead-Free, Comply With RoHS
 Label : Surface Print

Wiring Diagram



TC location (Bottom)

